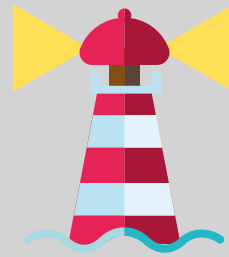


COMMUNICATING WITH LIGHT



CHALLENGE

Use a handheld torch or light on your phone to send messages to a friend or family member.

You could do this in your back garden or at home when it gets dark.



Morse code can be used a way of sending messages using either light or sound. Letters and numbers have their own sequence of dots and dashes. A dot is a short burst of light and a dash should be three times as long. A short pause is left between letters and a longer pause between words.

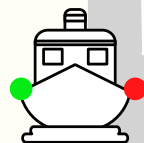
MORSE CODE KEY

A	• —	U	• • —
B	••• —	V	• • • —
C	• — •• —	W	• — •• —
D	• — ••	X	• — •• —
E	•	Y	• — •• —
F	• • — •	Z	• — — ••
G	• — — •		
H	• • • •		
I	• •		
J	• — — —	1	• — — — —
K	• — • —	2	• • — — —
L	• — ••	3	• • • — —
M	— —	4	• • • • —
N	— •	5	• • • • •
O	— — —	6	— ••••
P	• — — •	7	— — •••
Q	— — • —	8	— — — ••
R	• — ••	9	— — — — •
S	• • •	0	— — — — —
T	—		

Lights at sea

Ships at sea have lights to help show which way the vessel is travelling and this is particularly useful at night or during bad weather.

When facing the **bow** (front) the **port** (left) side light is **red** and the **starboard** (right) side is **green**.



Can you think of any other lights you might see at the harbour or out at sea? What are they used for?



Space to make notes or practice your morse code. Try your name first . . .

